

# Scivola T round - Kit B - knob/knob, with key, 38-48 mm door thickness



### Description

Lock kit with hook and two steel flush pulls with thumb turn. The articulated key folds into the recess of two steel pulls. All the elements have been designed to eliminate any superfluous projections.

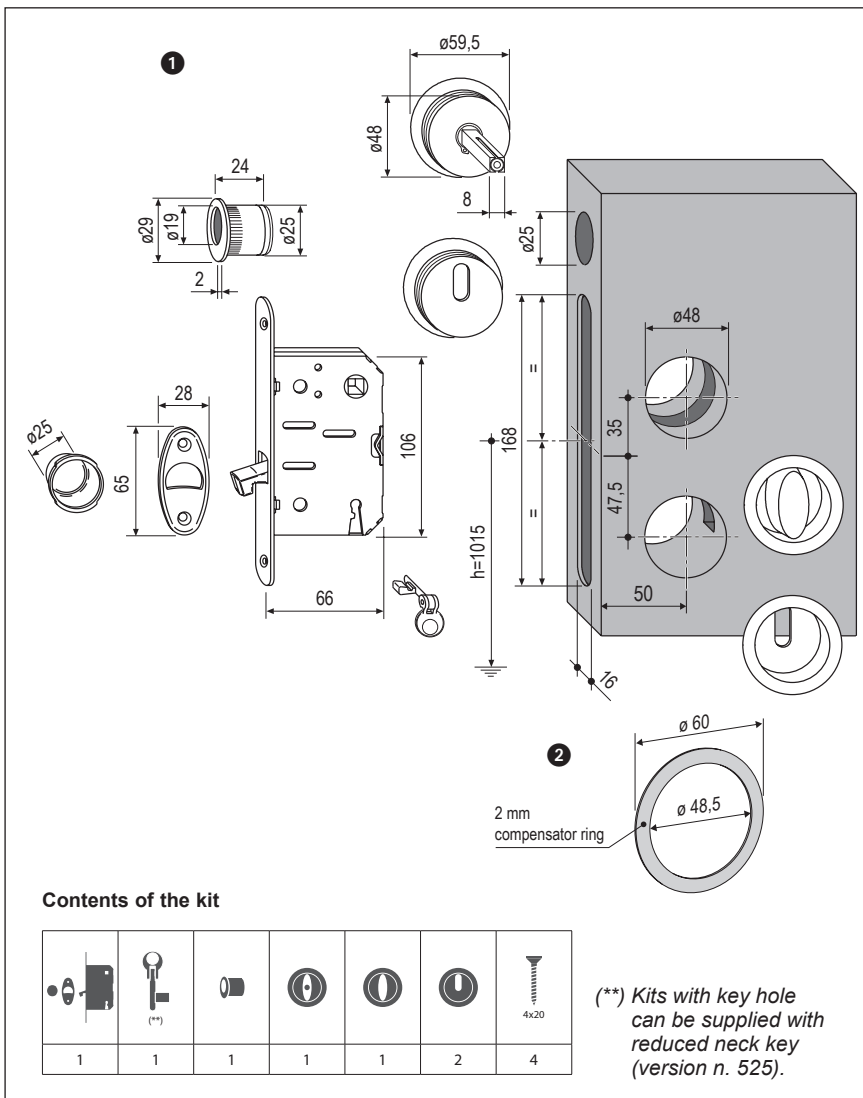
### Use

For concealed, sliding timber doors on rooms where the door is closed and locked with a key from both sides. Suitable for panels with a thickness of 38 to 48 mm.

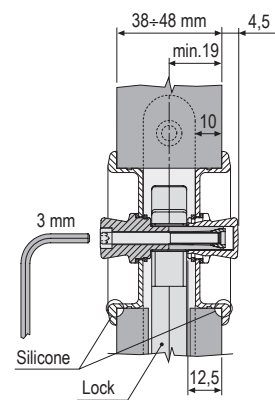
### Fastening

The pulls are directly secured by expansion squared spindle, automatically adapting to 38 ÷ 48 mm wide doors, without any additional screw or plastic striker plate. The thumb turns are secured by embedding, aided by silicone. Follow the assembly instructions provided with the kit. Milling cutters art. Z00005.48.01- 48 mm diameter, are available for milling the pull recesses.

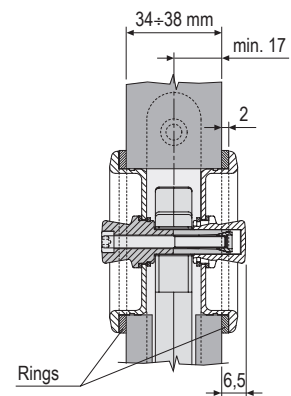
**Note.** All the kit components come in a single package.



### HANDLES ASSEMBLY



### Ø48 MM RING FOR 34-38 MM DOOR THICKNESS



### Order Specifications

Ref.	Article	
1	B03938.50.XX	1
2	B00700.30.XX	

**Note.** Refer to the price list in force to check the availability of the finishes.