

TENAX for ø 34 drilling



Description

Protective rim guard anti-drilling and anti-tear-out for ø 34 mm through hole. Black embossed finish.

Application

on wooden, Aluminium, PVC doors. When PVC and Aluminium profiles have a step, use an adapter of 3 mm art H32307.03.99

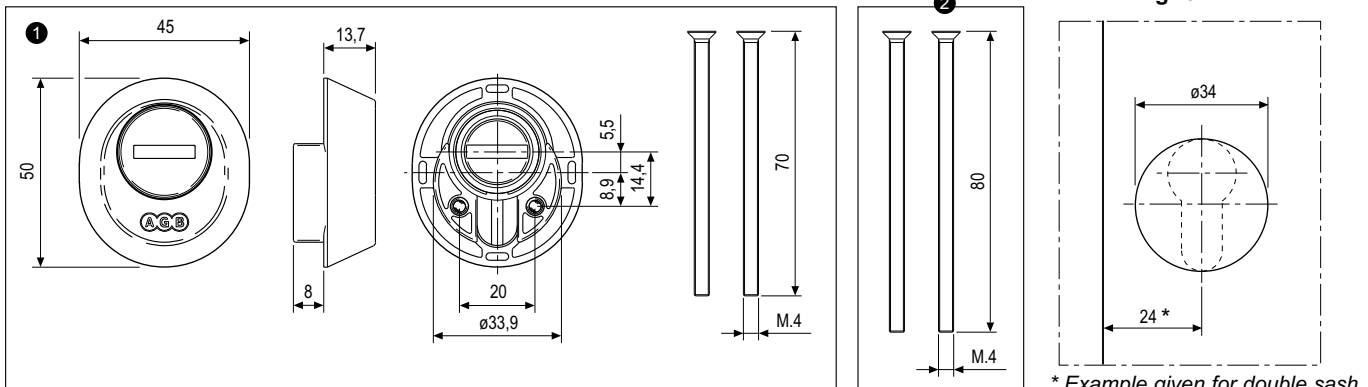
Mounting

From the inside with M4 screws supplied together with the item.

Order specifications

Ref.	Article	Description
1	H32308.00.XX	Eschutcheon
2	H32302.80.15	M4x80 screws

Note. Refer to the price list in force to check the availability of the finishes.

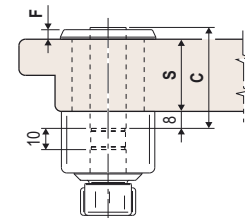


* Example given for double sash.

Calculation formulas for the choice of the cylinder "C" dimension according to the shutter adapter

WOOD

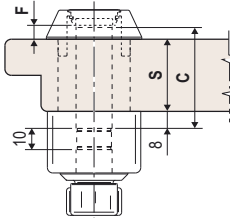
Example with ESCHUTCHEON



Formula for wood **C = S + F + 8**

Shutter thickness (S) = 40 mm
 F Eschutcheon = 4,5 mm
 C = 40+4,5+8 = 52,5 mm
 Choose a cylinder of "C" 55 mm (CX7516.10.55)

Example with TENAX

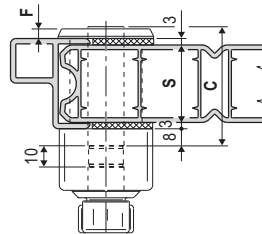


max. S = 45 mm with screws of 70
 55 mm with screws of 80

Shutter thickness (S) = 40 mm
 F Tenax = from 1 to 6 mm
 C = 40+5+8 = 53 mm
 Choose a cylinder of "C" 50 mm (CX7516.10.50) *

PVC and Aluminium

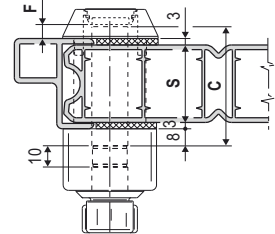
Example with ESCHUTCHEON



Formula for PVC and Aluminium **C = S + 3 + 3 + F + 8**

Shutter thickness (S) = 40 mm
 F Eschutcheon = 4,5 mm
 C = 40+3+3+4,5+8 = 58,5 mm
 Choose a cylinder of "C" 60 mm (CX7516.10.60)

Example with TENAX



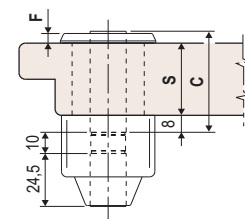
max. S = 45 mm with screws of 70
 55 mm with screws of 80

Shutter thickness (S) = 40 mm
 F Tenax = from 1 to 6 mm
 C = 40+3+3+5+8 = 59 mm
 Choose a cylinder of "C" 55 mm (CX7516.10.55) *

Cylinder Mod. Ariete

Cylinder key-key

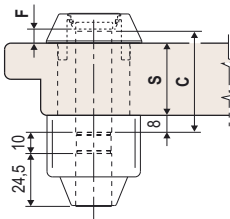
Example with ESCHUTCHEON



Formula for wood **C = S + F + 8**

Shutter thickness (S) = 40 mm
 F Eschutcheon = 4,5 mm
 C = 40+4,5+8 = 52,5 mm
 Choose a cylinder of "C" 55 mm (CXXXXX.25.55)

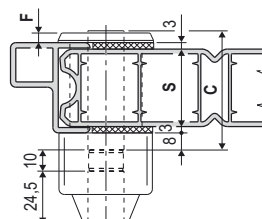
Example with TENAX



max. S = 45 mm with screws of 70
 55 mm with screws of 80

Shutter thickness (S) = 40 mm
 F Tenax = from 1 to 6 mm
 C = 40+5+8 = 53 mm
 Choose a cylinder of "C" 50 mm (CXXXXX.25.55) *

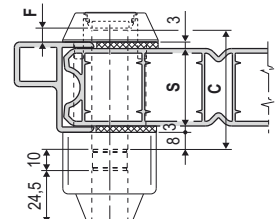
Example with ESCHUTCHEON



Formula for PVC and Aluminium **C = S + 3 + 3 + F + 8**

Shutter thickness (S) = 40 mm
 F Eschutcheon = 4,5 mm
 C = 40+3+3+4,5+8 = 58,5 mm
 Choose a cylinder of "C" 60 mm (CX7516.10.60)

Example with TENAX



max. S = 45 mm with screws of 70
 55 mm with screws of 80

Shutter thickness (S) = 40 mm
 F Tenax = from 1 to 6 mm
 C = 40+3+3+5+8 = 59 mm
 Choose a cylinder of "C" 55 mm (CX7516.10.55) *

* Choosing the "C" measure of 55 mm, you will overpass the max. dimension of 6 mm for cylinder protrusion and you will touch the Tenax.