

TENAX Oval Shape with internal stud



Characteristics

- TENAX: One-piece protective rim guard for cylinders, oval shape version.
- One-piece hardened stainless steel body AISI 420 with a strength over 55 HRC.
- Difficult grab with burglary tools thanks to the sloping shape.
- Anti-scratch surface and high resistance against corrosion (over 1000 hours in salt fog test) (SS DIN 50021; 5% salt; 35°C).
- 4 different sizes (GR) with available thickness from 10 to 18 mm.
- Gilded PVD and satin chromium plated finishes.
- M4 through screws made of hardened steel with $\varnothing 2,5$ mm hexagonal head.

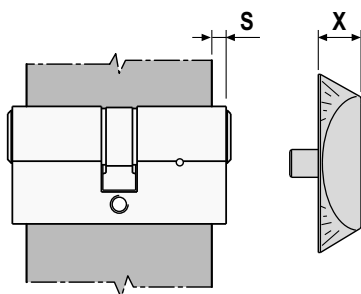
Order specifications

Article	TICKNESS	PROTRUSION	GR
	X	S	
C94700.10.XX	10	4	1
C94700.12.35	12	6	2
C94700.16.XX	16	10	4
C94700.18.XX	18	12	5

X = TENAX thickness flush with the door

S = cylinder projection flush with the door

Note. Refer to the price list in force to check the availability of the finishes



GR	X mm	S mm
1	10	0+4
2	12	0+6
4	16	4+10
5	18	6+12

