

# Scivola oval - Kit T - pendant/pendant, with key, 38-47 mm door thickness



**Description**

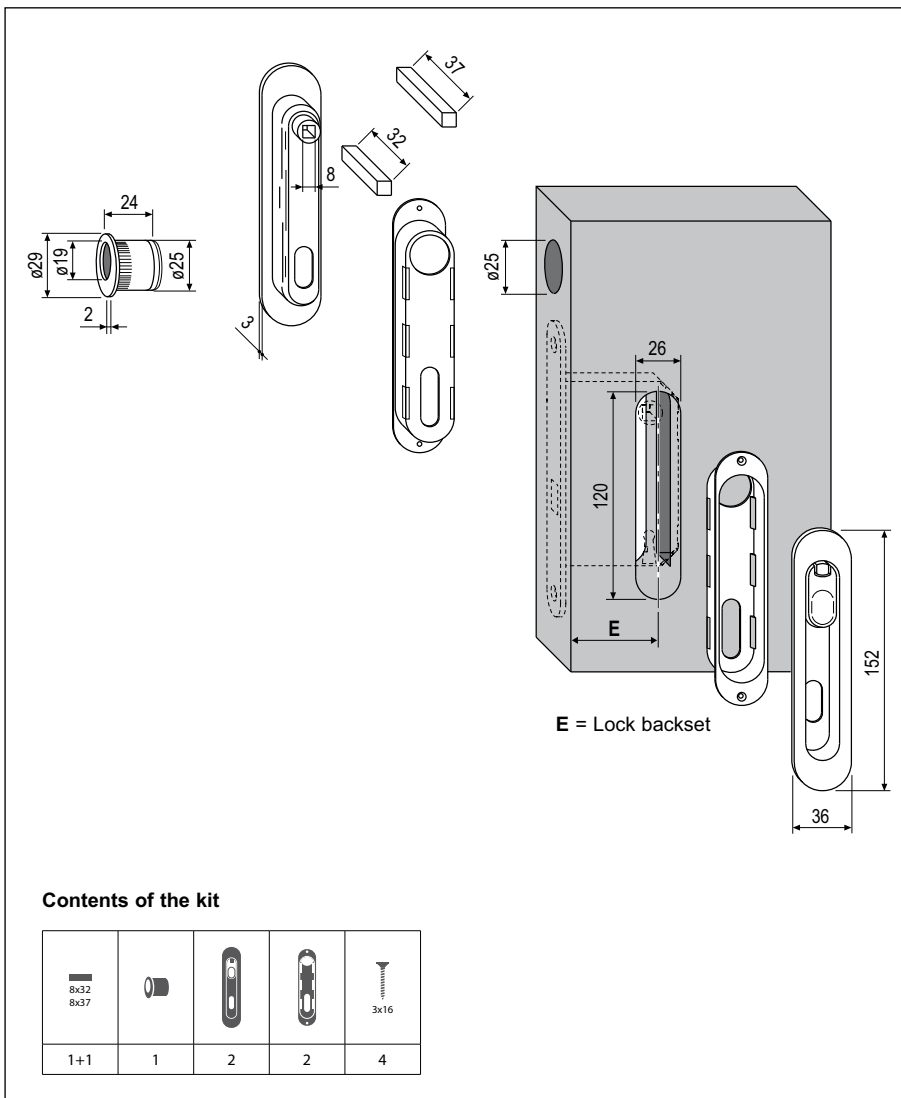
Kit with two pendant/pendant handles on brass plates, designed to eliminate any superfluous projections.

**Use**

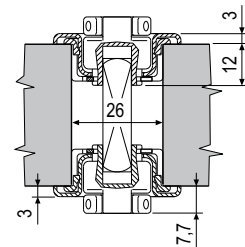
To be coupled with Scivola lock on sliding doors where the door is closed on both sides and locked with the key. For 38-47 mm thick panels.

**Fastening**

The plates are snap onto strike plates and not secured by visible screws.



**STRIKER PLATE ASSEMBLY AND DIMENSIONS**



**PLATE ASSEMBLY**

- 1) Drill the panel
- 2) Insert the striker plates in the holes and fasten them with the screws
- 3) Snap the plates onto the striker plates

**Note.** Fasten the striker plates to the panel before snapping on the plates.

**Order Specifications**

	Article	
	B01927.03.XX	

**Note.** Refer to the price list in force to check the availability of the finishes.